

Front-Opening Counter P 7090 - DELTA

P 7090 Front-Opening Counter with DELTA – Intercom

This unit is designed for flush-mounting in façades and partition walls. It is used particularly as a drive-in counter by banks, petrol stations and chemists or as a sign-off counter at gatehouses and weighbridges. An intercom is integrated into the unit, to ensure good communication between outside and inside.

Security

The P 7090 corresponds to the German Accident Prevention Regulations BGV C9 (UVV-Kassen). A bullet-resistant version of the unit can be supplied upon request.

Operation

This is a manually-operated unit. The carriage is pushed outwards or drawn inwards using a lever and locks in both end positions. The front flap opens upwards, thereby allowing it to be used as a writing surface for e.g. signing receipts. The operator side of the unit is protected from draughts by a plexiglass plate.

Construction and Finish

Robust steel construction with a long-lasting, textured, lacquered finish. The payment carriage is in RAL 9005, jet black, and the inside operating surface is in RAL 7032, pebble grey. The standard front facing is in brushed stainless steel.

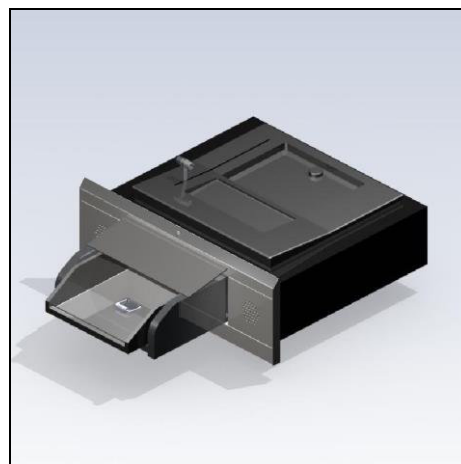
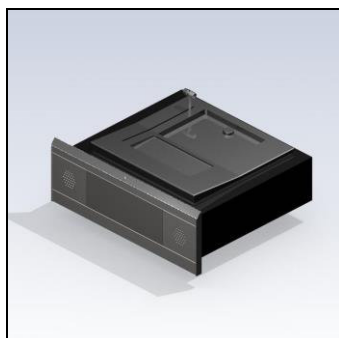
A complete SITEC-DELTA intercom is integrated into the front-opening counter, ready to plug in. A desktop main control (for inside) is supplied as standard. The central control should be located under the counter surface.

Installation

The unit should be pushed from outside into the prepared wall aperture. A suitable strong support should be provided on the operator side.

The unit should be fixed using the fixing brackets supplied, screwing them in laterally with the unit and from below with the operator's counter surface. A 230 volt mains socket is required to connect the integrated DELTA intercom system.

Care should be taken that the unit can be easily disassembled should repairs or maintenance be required at a later stage.



Integrated SITEC-DELTA intercom system

Scope of Supply - (Article Number: 153967)

P 7090 Front-opening counter
Inside plexiglass plate to counter draughts
Payment carriage with banknote clip
Lateral fixing brackets with elongated slots
incl. the required screws
Parts for the DELTA - intercom
Operating instructions for the intercom

Optional Items

P 7090, without integrated intercom
P 7090/S, with front-facing dimensions to suit

also special units e.g. for thicker walls, with different facing dimensions, special (RAL) colours, etc. Details upon request.

Security

Corresponds to the German Accident Prevention Regulations BGV C9 (UVV-Kassen).

Wall Aperture

W x H = 690 x 190 mm
Wall thickness above: max. 75 mm

Front Facing

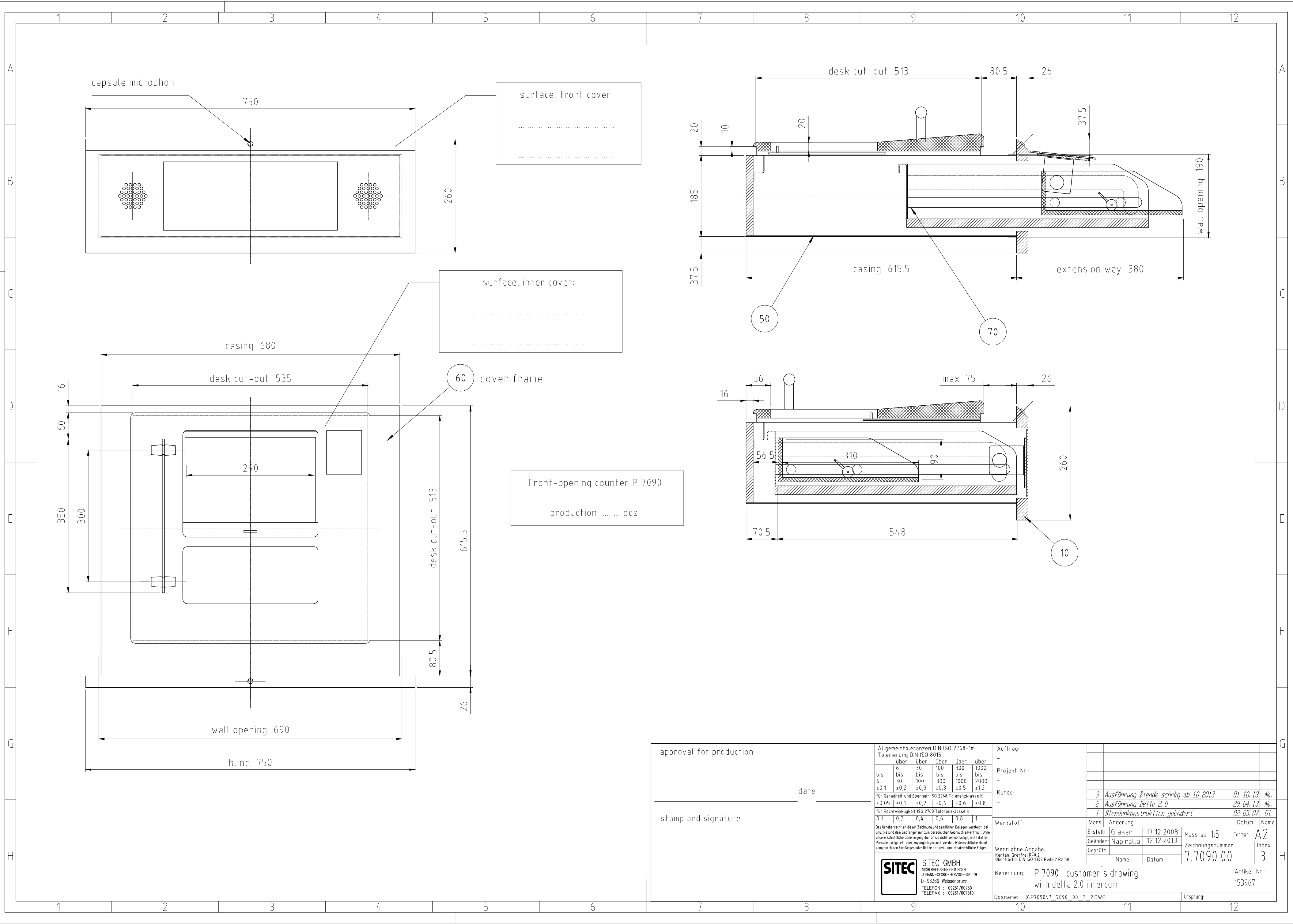
L = 750 mm, H = 260 mm

Inside Pass Through Dimensions

WxHxD = 290 x 90 x 310 mm (in the lower area – see drawing)

Information Required on Order

Description and article number, finish of intercom's main control



approval for production	Allgemeintoleranzen DIN ISO 2768-1m Tolerierung DIN ISO 8015	Auftrag: -		
date:	Tolerierung DIN ISO 8015	Projekt-Nr.: -		
stamp and signature	Tolerierung DIN ISO 8015	Kunde: -		
date:	Tolerierung DIN ISO 8015	Werkstoff:		
stamp and signature	Tolerierung DIN ISO 8015	Wenn ohne Angabe: Kanten: Grattfrei R-0,2 Oberfläche: DIN ISO 1392 Reihe2 Rz 50		
date:	Tolerierung DIN ISO 8015	Benennung: P 7090 customer's drawing with delta 2.0 intercom		
stamp and signature	Tolerierung DIN ISO 8015	Dosname: X:P7090\7_7090_00_3_2.DWG		
date:	Tolerierung DIN ISO 8015	Ursprung:		
stamp and signature	Tolerierung DIN ISO 8015	Artikel-Nr.: 153967		