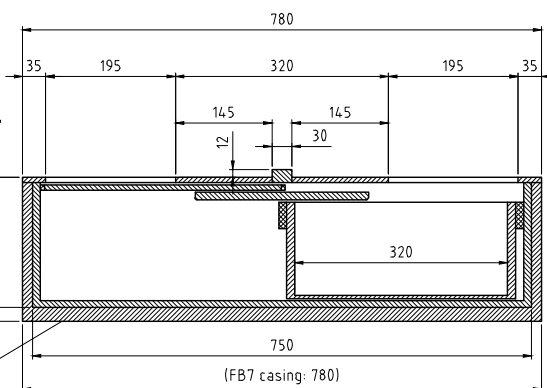


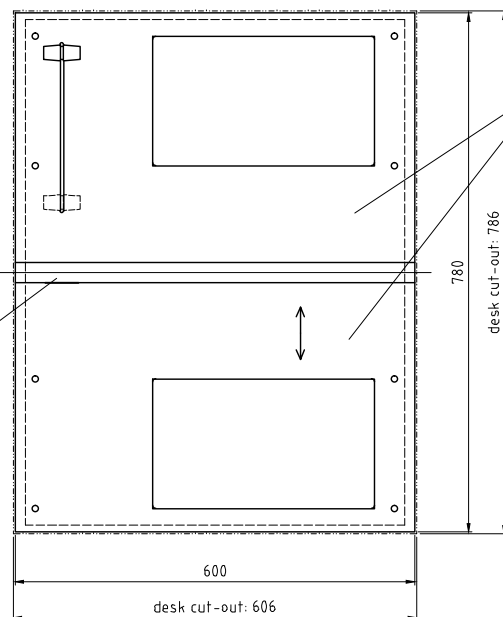
inside / cashier



outside / customer

casing only needed for FB7!

inside / cashier



The stop bar can be  
screwed off

surface, cover:

Plate cut-out: 606mm x 786mm

From the outside, the unit is inserted from above into the prepared cut-out  
or inserted from the cashier-side.  
The tray is manually driven.

This unit has been manufactured with the greatest care.  
However, after many years of use, repair works may become necessary.

For demounting, it should therefore be easy to pull out the device to cashier-side.

Subject to technical change.

#### Transfer Tray P7038 - execution:

FB6, RAL ... laquered	item number:	100784
FB6, stainless steel brushed	item number:	106346
FB7, RAL ... laquered	item number:	100785
FB7, stainless steel brushed	item number:	119786

approval for production	date:	Allgemeine Toleranzen DIN ISO 2768-1m Tolerierung DIN ISO 8015 über über über über über bis bis bis bis bis 6 30 100 300 1000 ±0.1 ±0.2 ±0.3 ±0.5 ±1.2 für Gewinde und Ebenheit ISO 2768 Toleranzklasse K 0.1 0.3 0.4 0.6 0.8 1 für Rechtswinkel ISO 2768 Toleranzklasse K 0.1 0.3 0.4 0.6 0.8 1	Auftrag: STANDARD Projekt-Nr.: P7038 Kunde:	2 Textanpassung 1 Zeichnung Struktur Textanpassung	08.03.21 20.01.21 20.01.21 20.01.21	6L 6L 6L 6L
SITEC SITEC GMBH SCHNEIDERSTRASSE 19 D-96389 Weiden TELEFON: + 09361/9070 TELEFAX: + 09361/90750		Benennung: P7038 customer's drawing Transfer Tray P7038 Dosname: KP7038\7_0015_00_2_2.DWG		Ursprung:		