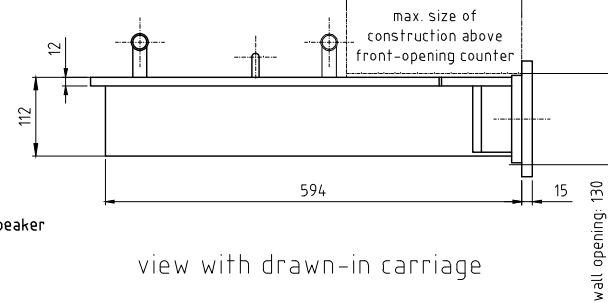
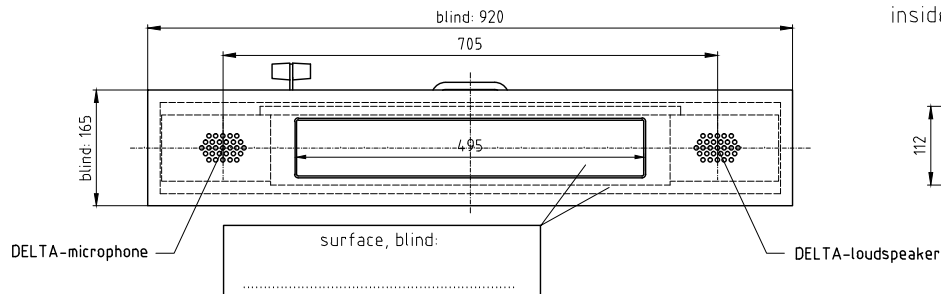


view from outside / customer

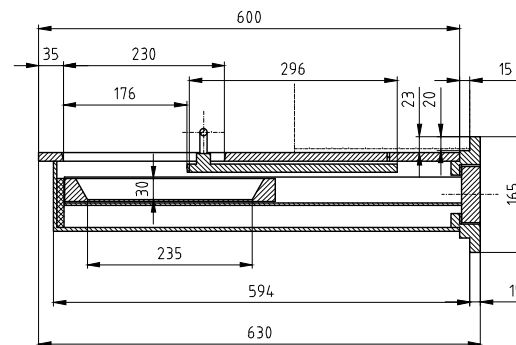
view from the side

inside / cashier

outside / customer



view with drawn-in carriage



From the outside, the front-opening counter will be pushed into the ready cut-out. In case the strength of wall (less than 500 mm) is too small, the unit needs to be supported at the inside.

The casing has to be cladded by third party at the inside.

The drive is manually.

Although the unit is produced with greatest care, after long operation repairs might become necessary. Therefore it should be possible to pull out the unit to the outside.

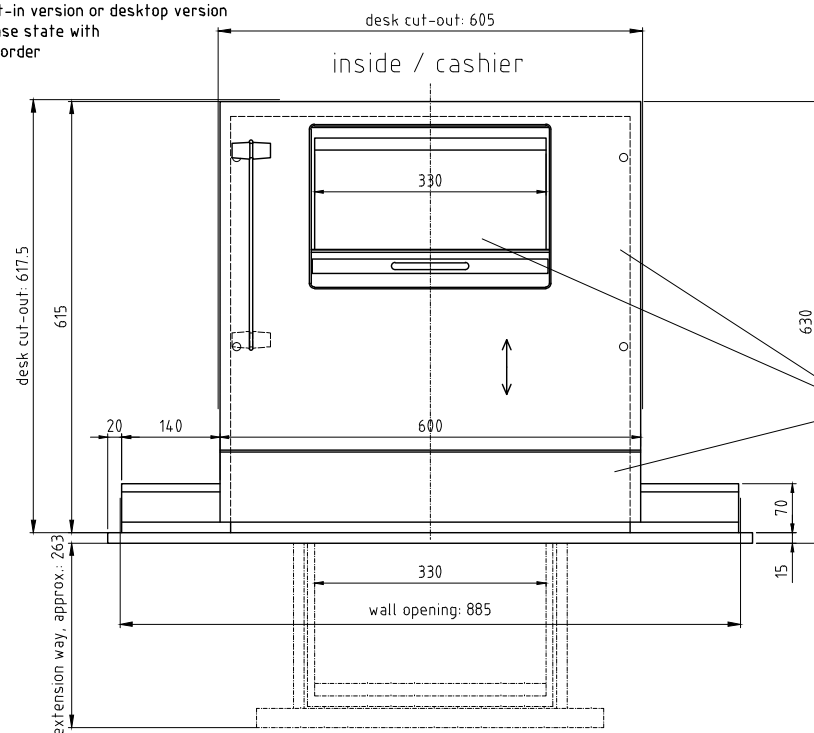
Subject to alterations.

Front-opening counter P7097 with delta - execution:

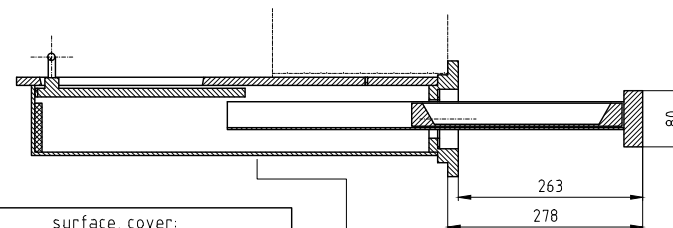
FB4, RAL ... laquered	item number:	155860
FB4, stainless steel brushed	item number:	133345
FB6, RAL ... laquered	item number:	156154
FB6, stainless steel brushed	item number:	132899

DELTA-main control
built-in version or desktop version
please state with
the order

view from inside / cashier



view with pulled out carriage



surface, cover:

the unit has to be supported
at the inner side

approval for production

stamp and signature

date:

Allgemeintoleranzen DIN ISO 2768-Ts			
	4	6	8
über	über	über	über
bis	bis	bis	bis
6	30	100	300
±0.1	±0.2	±0.3	±0.5
Für Genauigkeit und Oberflächengüte nach DIN 12781 Toleranzklasse K			
±0.05	±0.1	±0.2	±0.4
Für Reibschweißung nach DIN 1530 Toleranzklasse K			
0.1	0.3	1.0	3.0

SITEC GMBH
20080 KREIBITZ
JOHANN-GEORG-HEIDT-STR. 18
D-16369 WIESENBRUNN
TELEFON : 03026160750
TELEFAX : 03026160750

Auftrag:
P7097
Projekt-Nr.:
P7097
Kunde:

Werkstoff:

Wenn ohne Angabe:
Kunststoff (PE) 8-5
Oberfläche: DIN 50 182 Reihe 2 bis 50

Benennung:

P7097 customer's drawing with delta

Front-opening counter P7097 with delta

Desname: X/P7097/T_7097_01_4_2.DWG

4	Textanpassung	21.07.20	GL
3	Delta 2.0	21.08.13	Nb
2	DELTA integriert	05.02.01	GL
1	PKI-Teile gelöscht	23.11.00	Sc
Vers.	Änderung	Datum	Name
Erstellt	Glaser	17.12.2008	
Geändert	Glaser	22.07.2020	
Geprüft			
Name	Datum		

Massstab: 1:5
Formel: A2
Zeichnungsnummer: 7.7097.01
Index: 4

Artikel-Nr.:
auf Zg.

Umsprung: