

Transfer Tray P 7028

Transfer Tray P 7028

This transfer tray is suitable for flush built-in into cash desks and has one movable carriage and under it one fixed pass-through.

Moreover the unit is equipped with a speech channel at the side in order to allow communication between in- and outside without additional equipment.

It is intended for indoor and roofed outdoor use, in case documents and money are frequently interchanged and sometimes bigger objects are passed through.

Security

P 7028 corresponds to the Accident Prevention Regulations of the German Administrative Professional Association BGV C9 (UVV-Kassen).

Operation

The unit is operated manually. The money carriage locks in both end positions and in mid position. In mid position the lower fixed pass-through is covered. Thus there is no possibility to grasp through by hand. Unlocking is possible by pushing the slide control.

Construction and finish

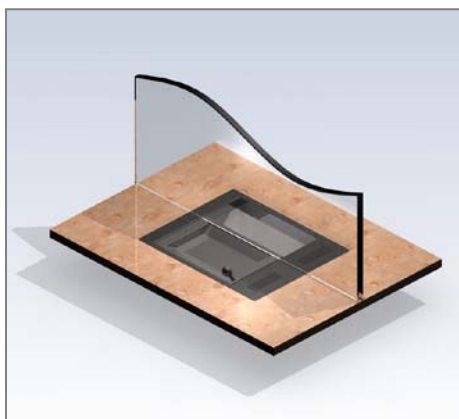
Robust steel construction with long-living and maintenance-free mechanics. Carriage made of impact-resistant plastic. Cover frame and carriage with abrasion-resistant structure lacquering (RAL 9005, Jet black).

Installation

The unit can be inserted from above into the prepared cut-out of the counter. The edges of the frame cover the cut-out. In order to build in the unit completely flush with the counter, the desk plate can be milled.

The unit has to be supported by e.g. consoles to make sure that the whole weight does not burden on the cover frame.

It should be also possible to dismantle the unit in case of later repairs and maintenance work will be necessary.



Intercommunication System

For the ordinary, occasional communication an additional intercommunication system is not necessarily needed.



Scope of delivery (Item No.: 100665)

Transfer Tray P 7028 - Standard Jet black

Possible variants

P 7028/VA, with cover frame in stainless steel V2a (Item No.: 114007)

P 7028/S, with cover frame in special RAL-colour according to customer's request

Please contact us.

Security

Corresponds to the Accident Prevention Regulations BGV C9 (UVV Kassen)

Cash-desk cut-out:

W x D = 520 x 420 mm

Outer dimensions:

W x H x D = 540 x 157 x 440 mm

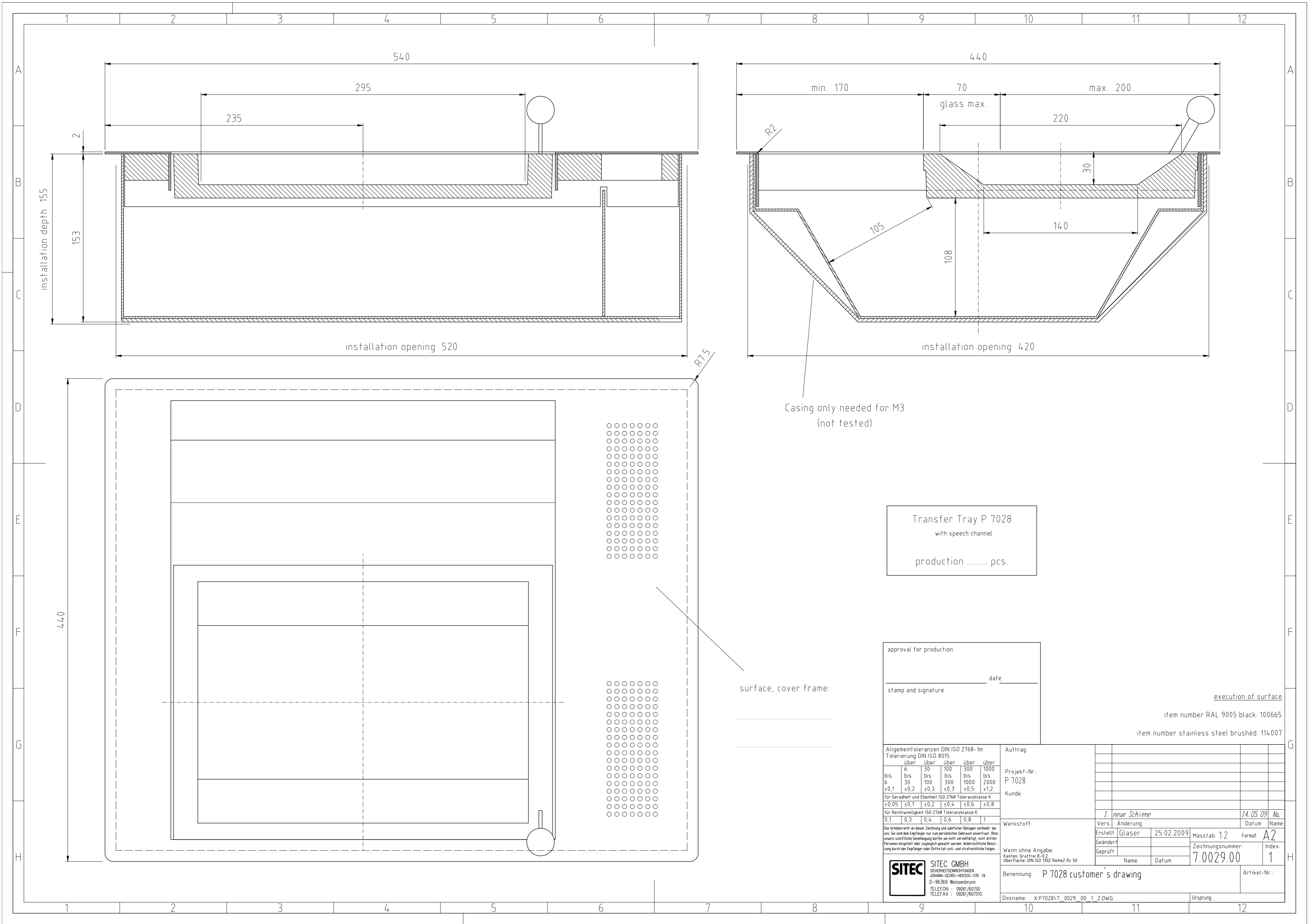
Inner clearance:

Upper tray: W x H x D = 295 x 30 x 140 mm

Lower tray: W x H x D = 295 x 108 x 220mm

Required information for order:

Name and Item No.



Casing only needed for M3
(not tested)

Transfer Tray P 7028
with speech channel
production pcs.

approval for production

_____ date _____

stamp and signature

execution of surface
item number RAL 9005 black: 100665
item number stainless steel brushed: 114.007

Allgemeintoleranzen DIN ISO 2768-1m		Tolerierung DIN ISO 8015	
über	bis	über	bis
6	30	100	300
bis 6	bis 30	bis 100	bis 300
±0,1	±0,2	±0,3	±0,5
Für Geradheit und Ebenheit ISO 2768 Toleranzklasse K			
±0,05	±0,1	±0,2	±0,4
Für Rechtwinkligkeit ISO 2768 Toleranzklasse K			
0,1	0,3	0,4	0,8

Auftrag:
Projekt-Nr.: P 7028
Kunde:

Vers.	Änderung	Datum	Name
1	neue Schiene	14.05.09	No.
Erstellt	Glaser	25.02.2009	Masstab: 1:2
Geändert			Format: A2
Geprüft			Zeichnungsnummer: 7.0029.00
			Index: 1

Wenn ohne Angabe:
Kanten: Graffrei R-0,2
Oberfläche: DIN ISO 1302 Rehe2 Rz 50

SITEC SITEC GMBH
SICHERHEITSEINRICHTUNGEN
JOHANN-GEORG-HERZOG-STR. 19
D-96369 Weissembaum
TELEFON : 09261/60750
TELEFAX : 09261/607510

Benennung: P 7028 customer's drawing
Artikel-Nr.:
Dosname: X:P7028\7_0029_00_1_2.DWG
Ursprung:

surface, cover frame:
.....
.....