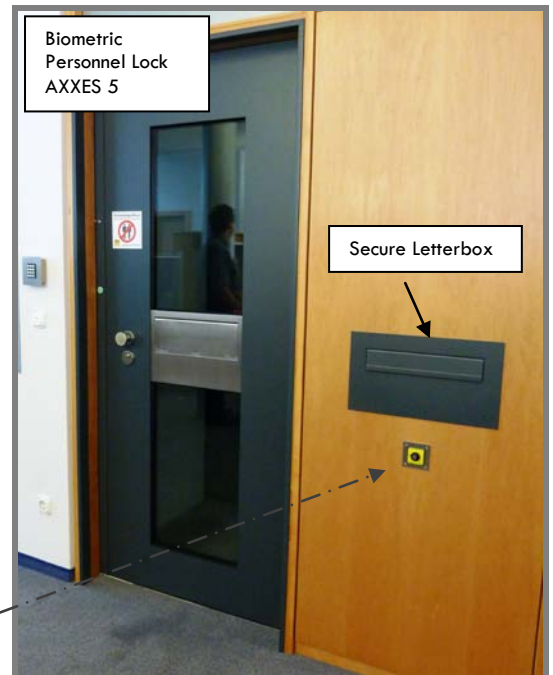
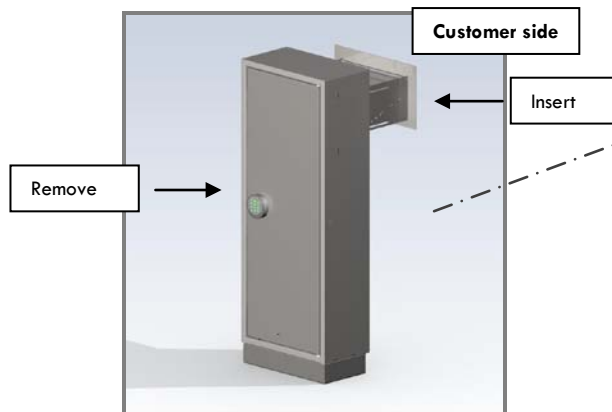


Secure Letterbox Keysafe

As a perfect complement to our biometric **Personnel Lock AXXES 5**, SITEC supplies accessories to make the working day easier for employees in

- Banks, Mailrooms
- Insurance offices, Authorities
- Industrial Concerns
- Computer and Data Centres
- Court buildings and Prisons
- Research & Development Facilities
- Laboratories, etc.

SITEC Secure Letterbox to "UVV-Kassen" guidelines, bullet-resistant



Staff no longer need to leave the secure area. Customers or unauthorised persons can post money or documents through the slot into the **Secure Letterbox** which is fitted into the door or partition wall. These can then be removed from the safe on the staff side.

Dimensions: W x H x D = 450 x 1.200 x 250 mm

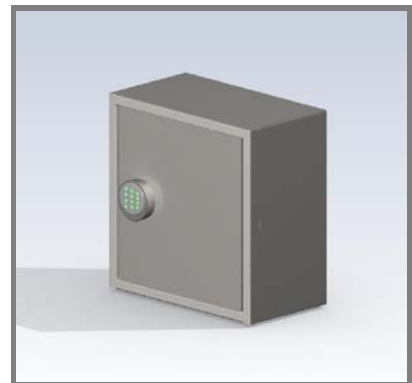
Installation: into prepared wall intrados or partition wall, suitable for wall thicknesses 100 – 250 mm

Finish:

- ✓ Strong, sheet steel casing, painted in RAL 9010 pure white or RAL 9006 white aluminium (other RAL shades upon request)
- ✓ With adjustable intermediate base, and fixing holes in base and rear wall
- ✓ Deposit slot (W 330 mm, H 45 mm) with front facing and duct, including tamper protection
- ✓ With receiving cabinet on inside for easy removal of deposited items
- ✓ Door (DIN right or DIN left – please specify on order) with integrated electronic lock (battery-operated with emergency opening facility) and adjustable time delay on opening

In every situation (door and insert slot open), there is **bullet-resistance protection as per UVV-Kassen guidelines!**

SITEC Keysafe with time delay lock



for storing safe keys and security keys, data storage media or other valuable items in accordance with the **"UVV-Kassen" Guidelines (§ 21)**

Dimensions: W x H x D = 450 x 450 x 250 mm

Finish: with digital time delay lock and battery supply