

P 7020 light Transfer Tray

P 7020 light Transfer Tray

This unit, designed to be flush-mounted in counters, is equipped with only one payment tray and therefore has the advantage of being very shallow. The integrated shaped section allows quick and easy coin removal. The P 7020 light transfer tray is used indoors and under protection outdoors, for simple document and cash transactions.

Security

The P 7020 light complies with the Accident Prevention Regulations of the German Administrative Professional Association BGV C9 (UVV-Kassen).

Operation

The payment tray locks in both end positions. It is operated by pressing on the unlocking device.

Construction and Design

Strong steel construction with a durable, maintenance-free mechanism. Payment tray is in impact-resistant plastic, with a black (RAL 9005, jet black), abrasion-resistant lacquered finish. The cover frame is made of V2a stainless steel.

Installation

The unit is fitted from above into a prepared cut-out section, with the surrounding frame covering the cut-out edges. The cover frame can also be milled into the counter surface for a flush-mounted finish.

The unit must be supported, to avoid its weight being on the cover frame.

It is important to ensure that the unit can be removed if necessary, e.g. for later repairs.

Intercom

We recommend installing our hands-free Delta intercom system, to ensure customer-friendly communication between the operator and the visitor.



Delivery Scope (Item No.: 113704)

P 7020 light transfer tray – tray and casing in standard black, cover frame in V2a stainless steel.

Security

Complies with the Accident Prevention Regulations BGV C9 (UVV Kassen)

Counter cut-out:

W x D = 452 x 399 mm

Outer dimensions:

W x H x D = 469 x 53 x 410 mm

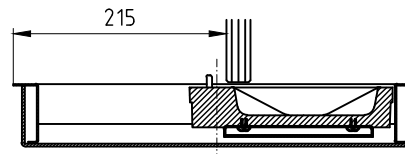
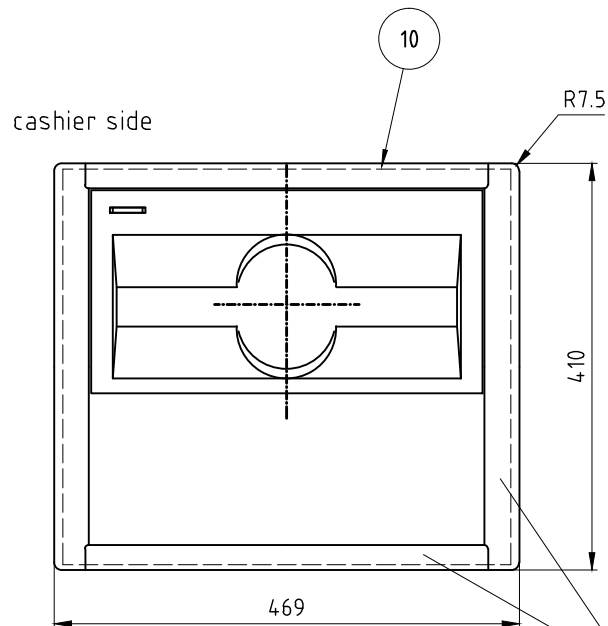
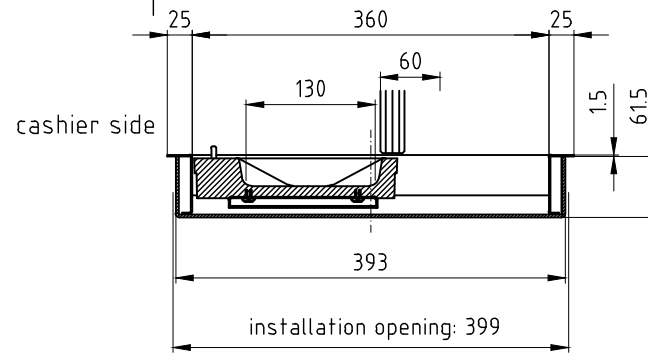
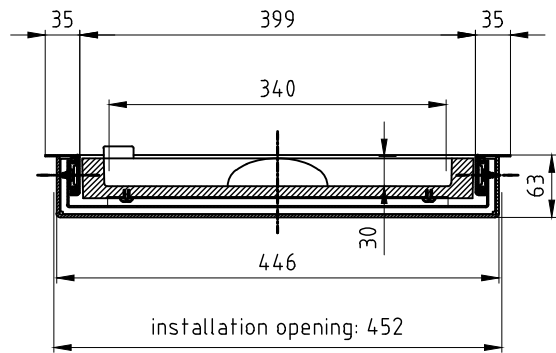
Inner clearance:

W x H x D = 340 x 30 x 130 mm

Information required for order

Name and item number

(we recommend: Delta intercom system)



Transfer-Tray P 7020 light
production: pcs.

approval for production
date: _____
stamp and signature

customer side
surface, cover frame:
stainless steel, brushed

Allgemeintoleranzen DIN ISO 2768-1m Tolerierung DIN ISO 8015		Auftrag: P 7020 L			
	über	über	über	über	über
bis	6	30	100	300	1000
6	bis	bis	bis	bis	bis
±0,1	±0,2	±0,3	±0,3	±0,5	±1,2
für Geradheit und Ebenheit ISO 2768 Toleranzklasse K					
±0,05	±0,1	±0,2	±0,4	±0,6	±0,8
für Rechtwinkligkeit ISO 2768 Toleranzklasse K					
0,1	0,3	0,4	0,6	0,8	1
Das Urheberrecht an dieser Zeichnung und sämtlicher Beilagen verbleibt bei uns. Sie sind den Empfänger nur zum persönlichen Gebrauch anvertraut. Ohne unsere schriftliche Genehmigung dürfen sie nicht vervielfältigt, nicht Dritten Personen mitgeteilt oder zugänglich gemacht werden. Widersätzliche Benutzung durch den Empfänger oder Dritte hat zivil- und strafrechtliche Folgen.					
Werkstoff:		1 neue Schiene		04.02.08	Ja
Vers. Änderung		Erstellt Glaser 22.07.2009		Masstab: 1:5	Format: A3
Geändert Glaser 22.07.2009		Geprüft		Zeichnungsnummer:	Index:
Name		Datum		7.0214.99	1
Benennung: P 7020 light customer's drawing				Artikel-Nr.: 113704	
Dosname: X:0000003\7_0214_99_1_2.DWG				Ursprung:	

SITEC SITEC CMBH
SICHERHEITSBERICHTUNGEN
JOHANN-GEORG-HERZOG-STR. 19
D-96369 Weissenbrunn
TELEFON : 09261/80750
TELEFAX : 09261/807510